

MEGALOCHARI VIII



PARTICULARS

Vessel Type	Tug
IMO Number	9199440
Port of Registry	Piraeus
Year Built	1998
Classification	INSB

DETAILS

Length Overall	29.0 m
Breadth	9.02 m
GRT-NRT	191.73 / 30.56
Maximum draft	4.1 m
Max Speed/ Consumption 24h	11 kn / 7 m ³
Economical speed/ Consumption 24h	9.5 kn / 5.3 m ³
Bollard Pull	37.7 t
Sewage Plant	7 m ³
Rudders	2x Fixed pitch
Joystick	1x Fitted

CAPACITY

Fuel Oil	72.4 m ³
Potable Water	12.4 m ³
Sewage	7 m ³

MACHINERY

Main Engine	2x Yanmar M220EN 1200 BHP each
Generators	2x Cummins 100 BHP – 70 KW each
Propulsion	2x Fixed pitch propellers

ACCOMMODATION

Berths	8
Total	5

FIRE FIGHTING

Monitors 2
Pumps 1x HSP 700m³/h

DECK EQUIPMENT

Towing Winch

Type Single drum with remote control on deck and wheelhouse
Pull 20 t
Wire Capacity 550 m x 38 mm
Brake Holding 70 t

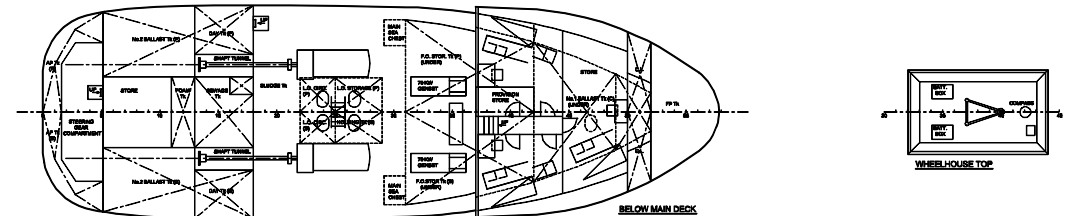
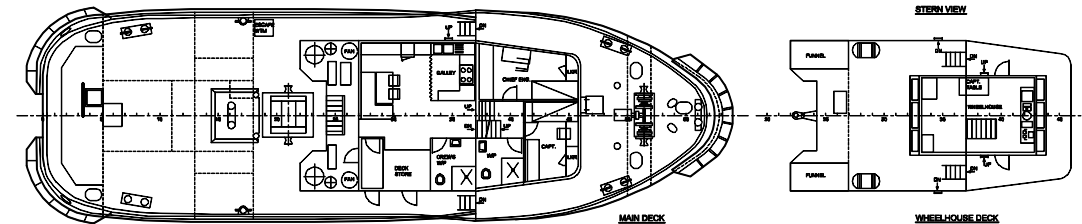
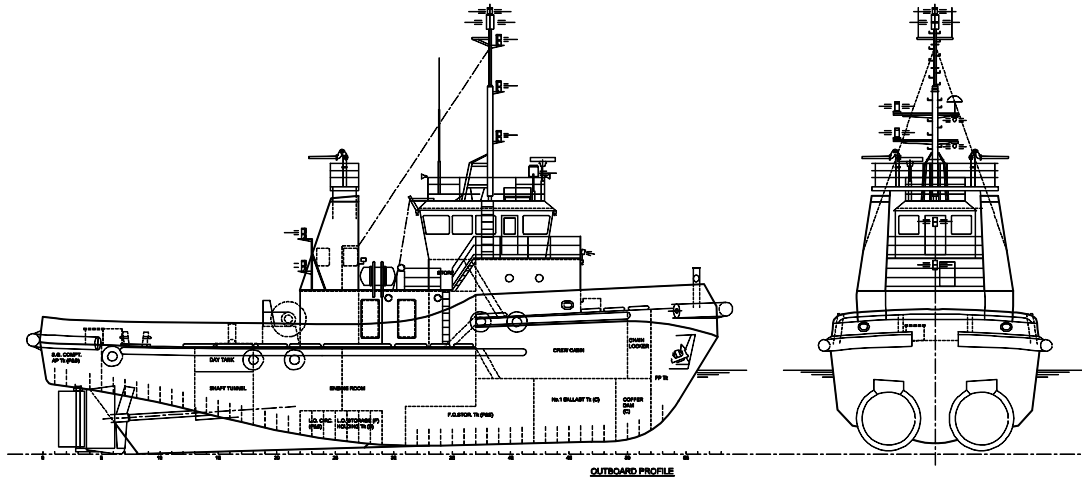
LIFESAVING

Liferafts 2x FMS FZ-002 FK-2400 25 persons
Lifejackets 8
Lifebuoys 6

GENERAL ARRANGEMENT

MEGALOCHARI VIII

No	Revision	Date



PRINCIPAL DIMENSIONS

Length O.A.:	29.000 M
Length B.P.:	28.500 M
Breadth (mid):	9.000 M
Depth (mid):	4.550 M
Draught (mid):	3.547 M

VESSEL:	T/B "MEGALOCHARI VIII"	IMO NO.:	9198440
TITLE:	GENERAL ARRANGEMENT		
 ALPHA MARINE CONSULTING LTD. MARINE CONSULTANTS & SURVEYORS T: +30 211 8891000, F: +30 211 8891038 mail@alphamm.com www.alphamm.com	DWG. NO.:	5542-05-0	
	SCALE:	1:100	
	DATE:	30/05/2014	